



3 rue de la pompe 79410 St Remy

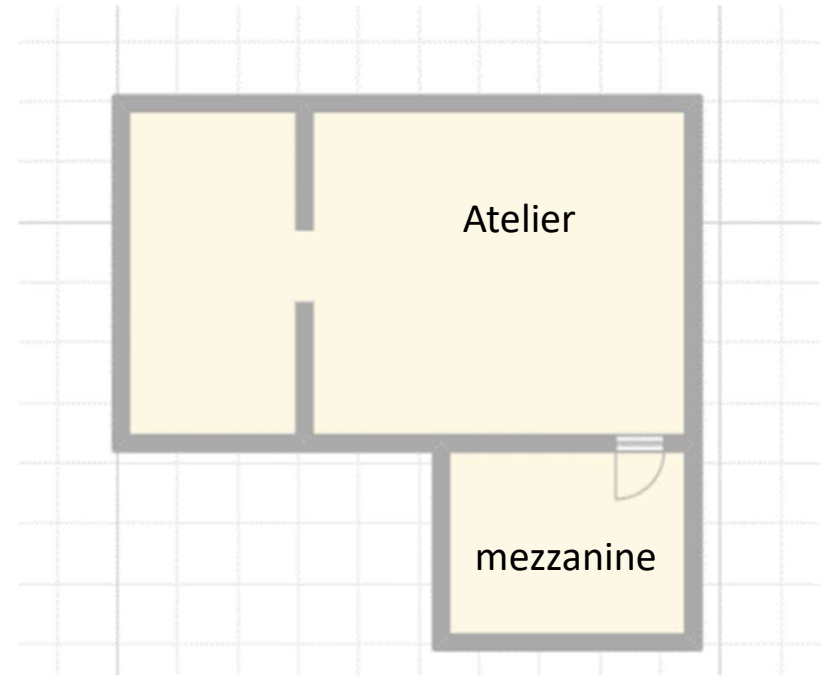
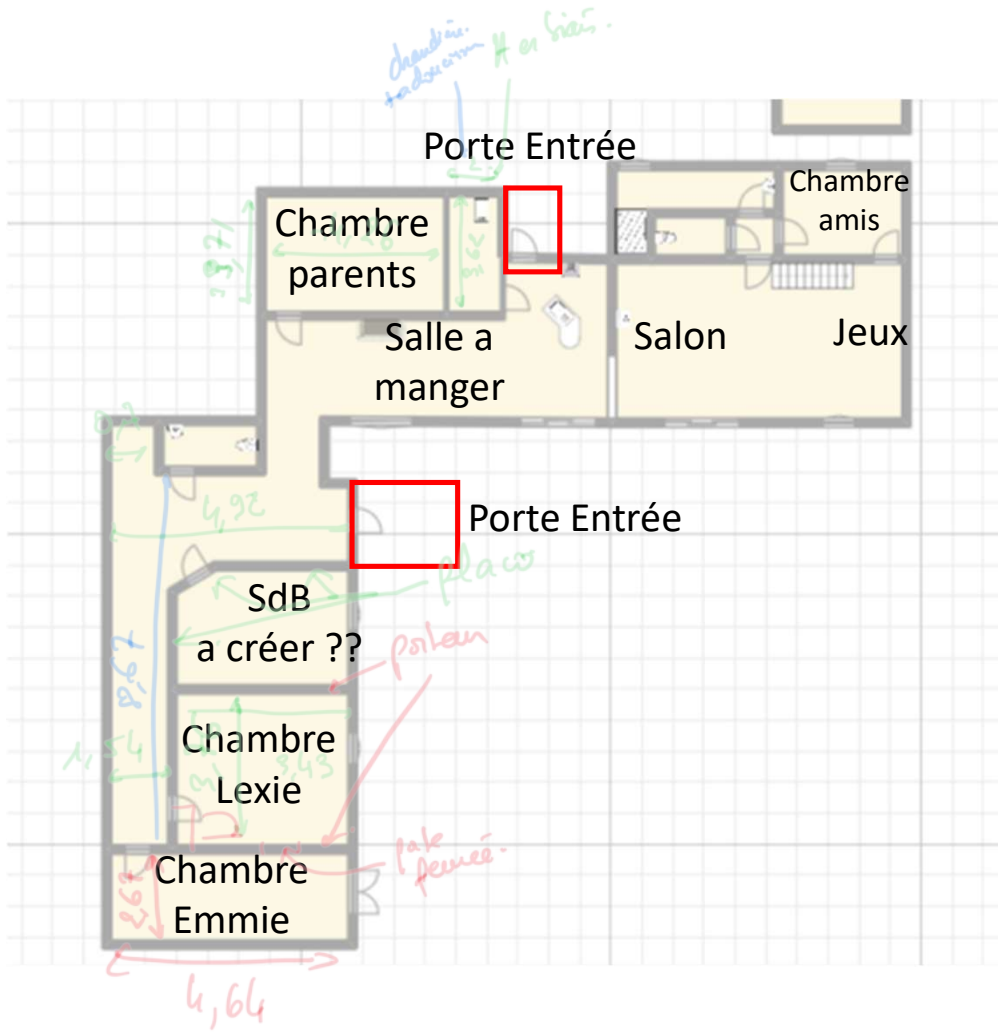


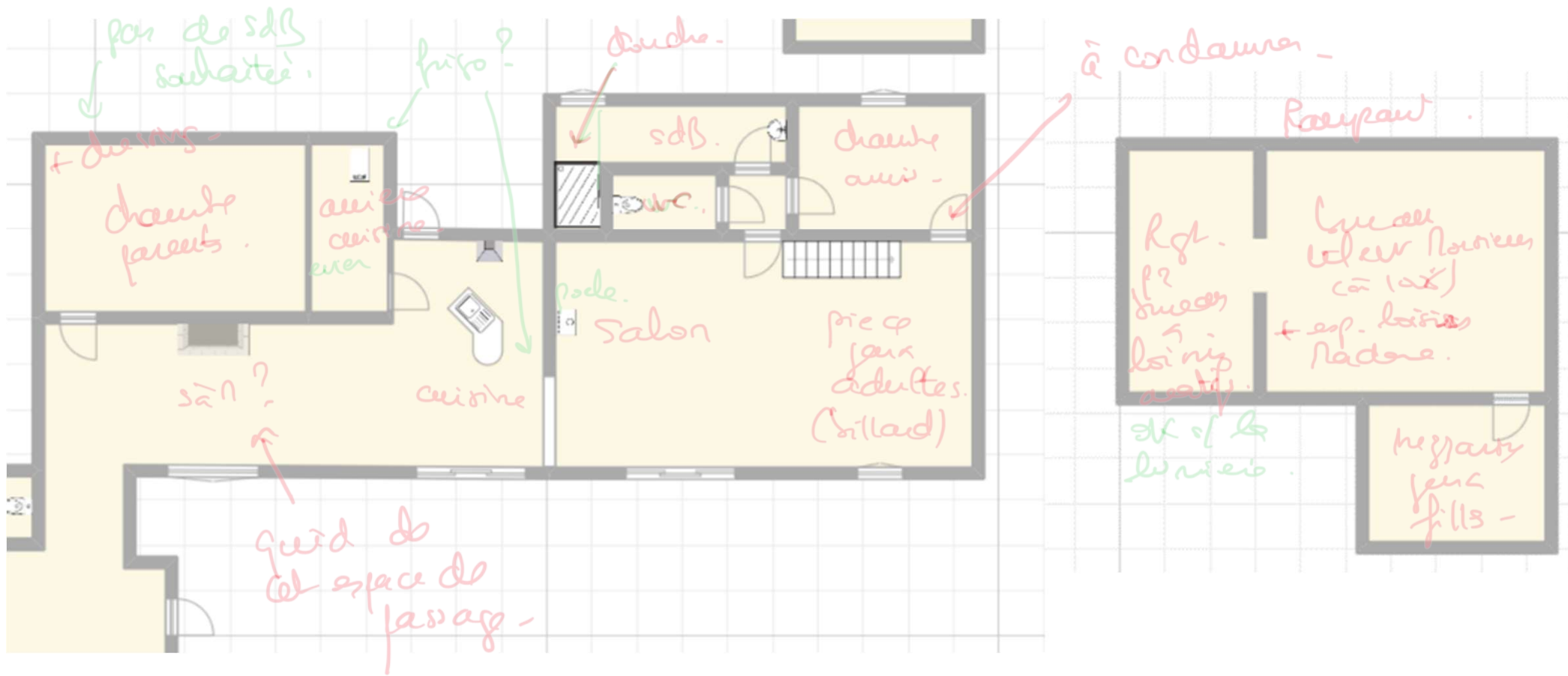
Entrée coté  
jardin

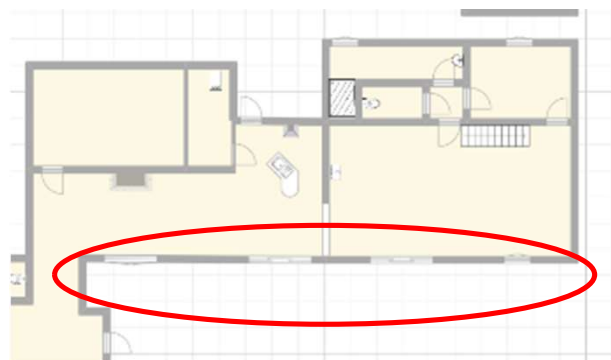
Petite cour pavé avec portail bois  
et entrée donnant sur cuisine

Double garage  
( 1 servira a rentrer une voiture,  
1 servira d'atelier)

Portail electrique permettant le  
passage des voitures



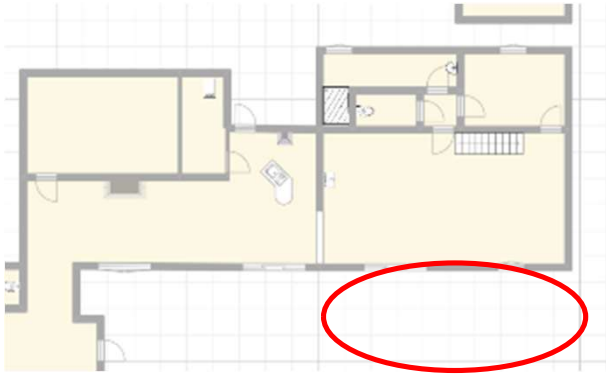


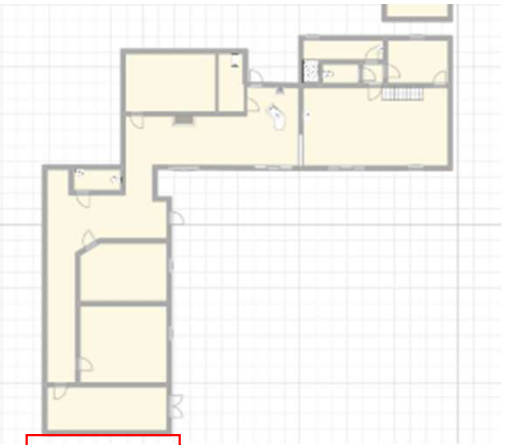


Entrée

Vers cuisine







Garage 1

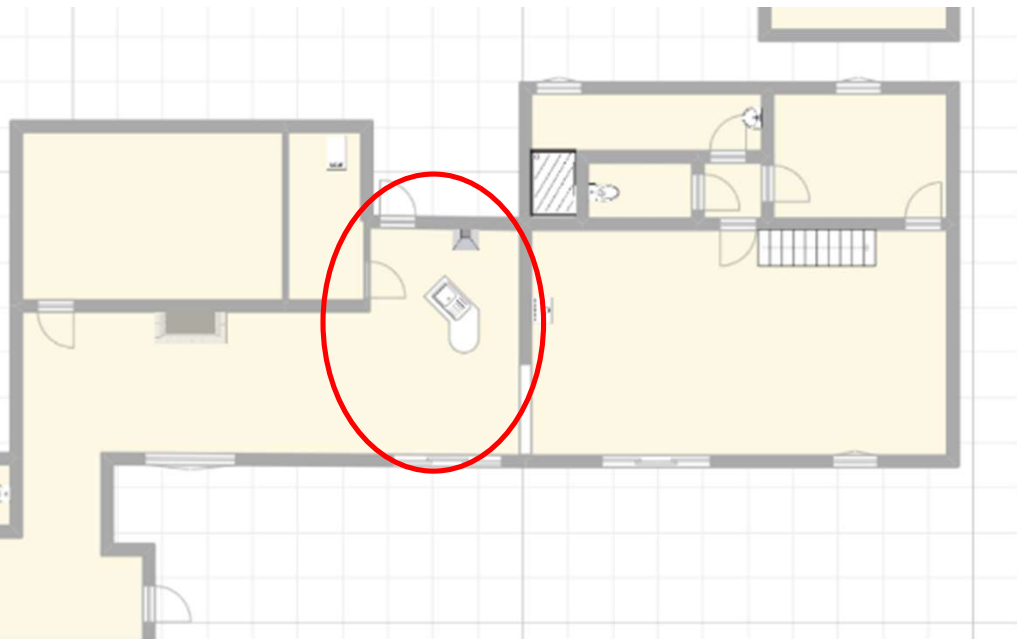


Garage 1  
Garage 2

Toiture en plaque fibro ciment amiante recouverte de tuiles

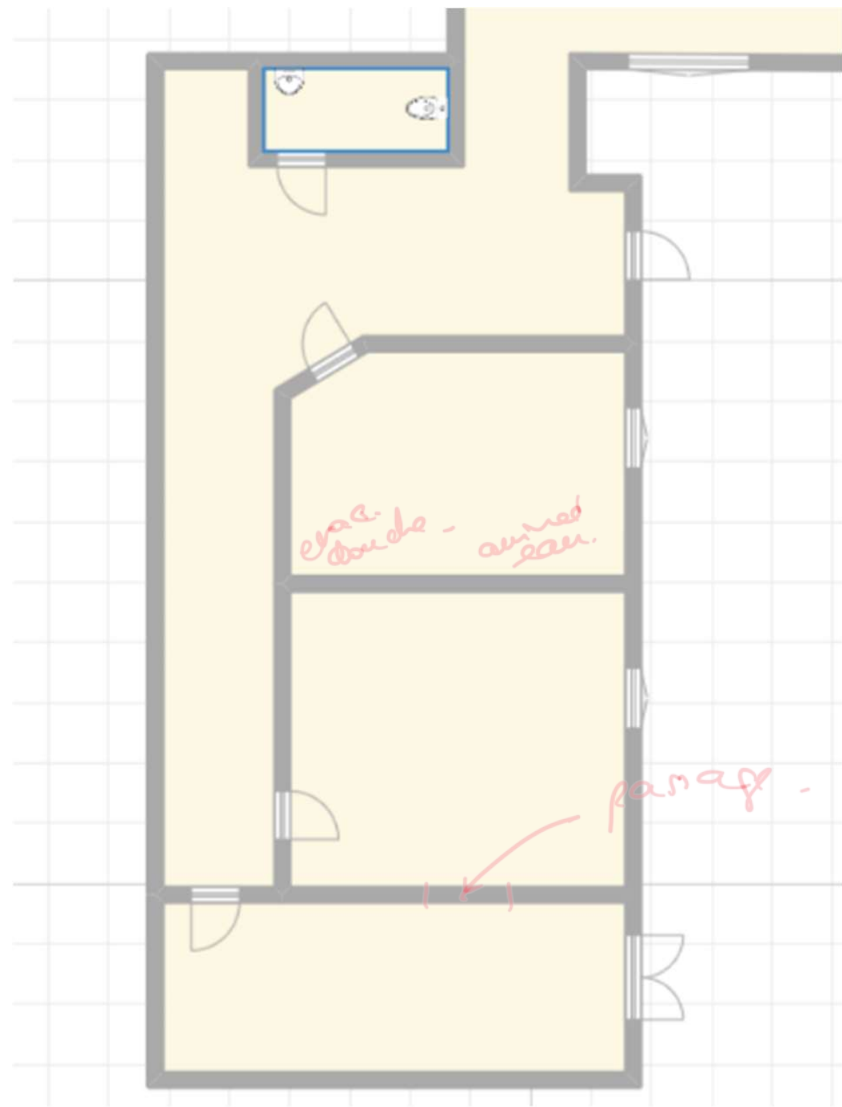
A faire:

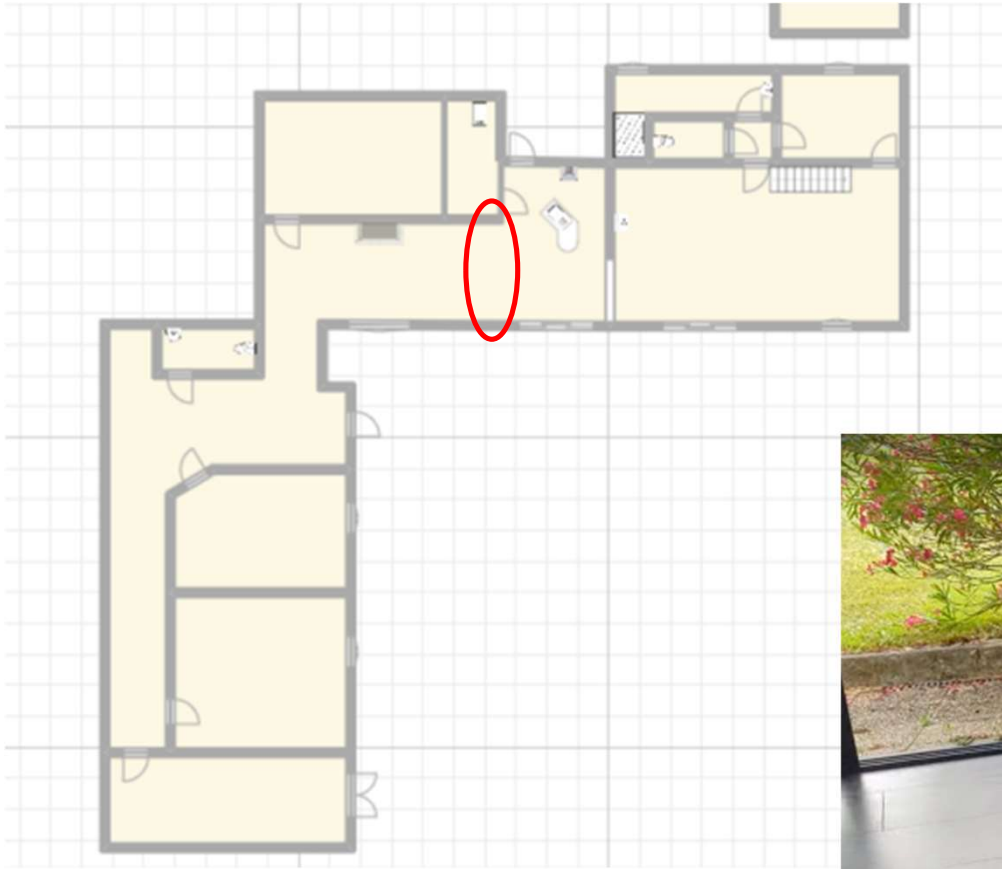
Retirer plaque amiante et remplacer pas bac acier

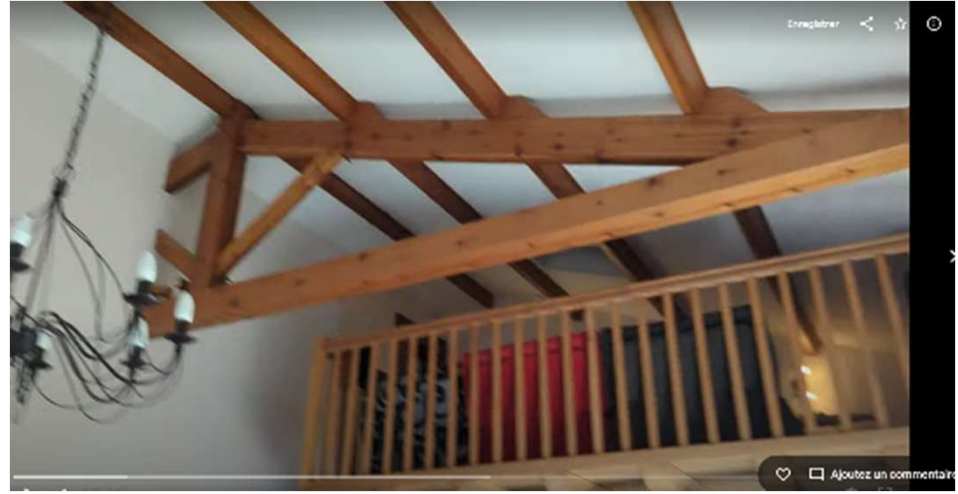
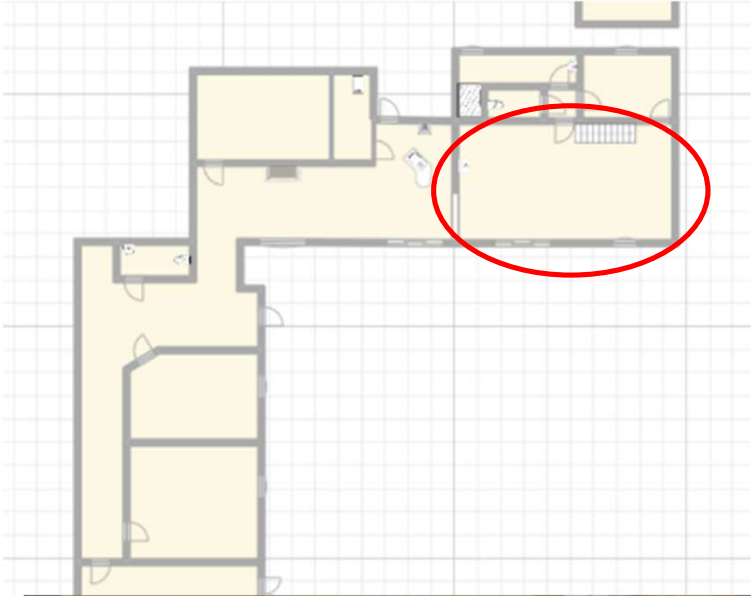


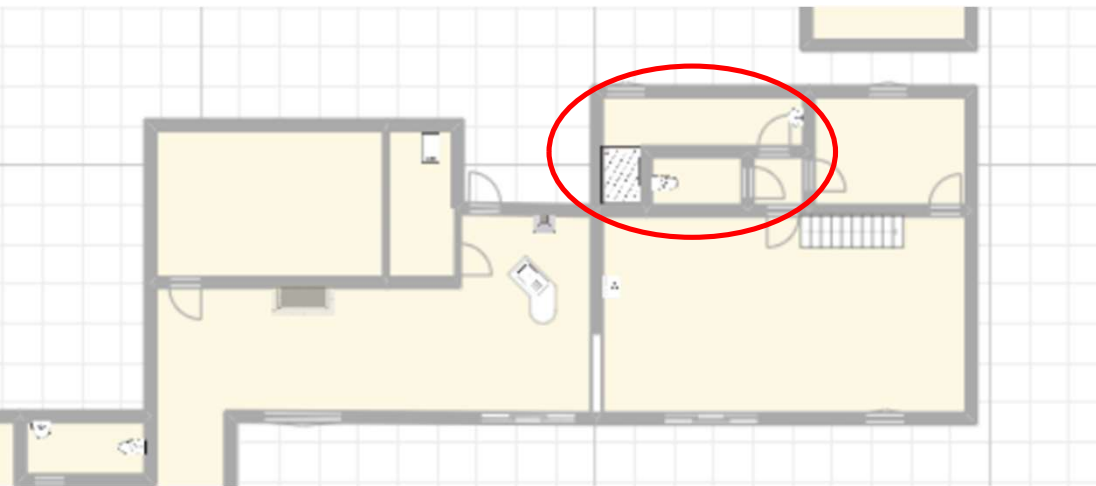
Grande hauteur sous plafond



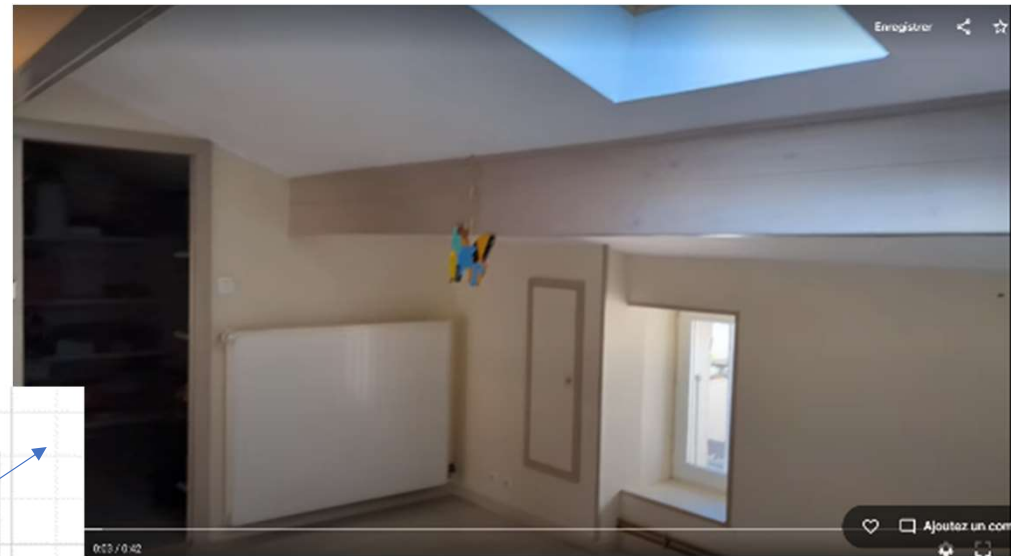
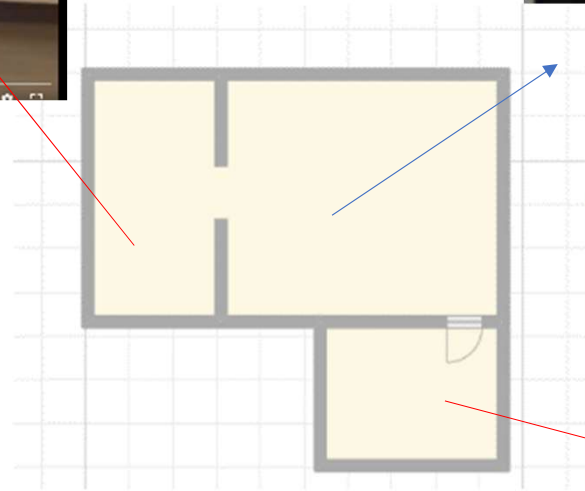




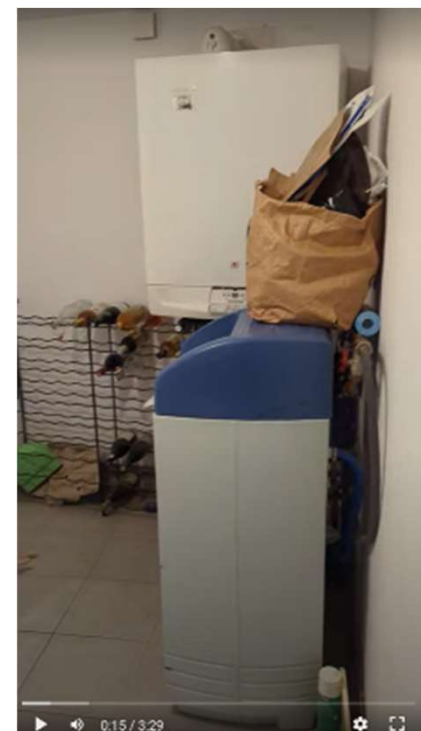
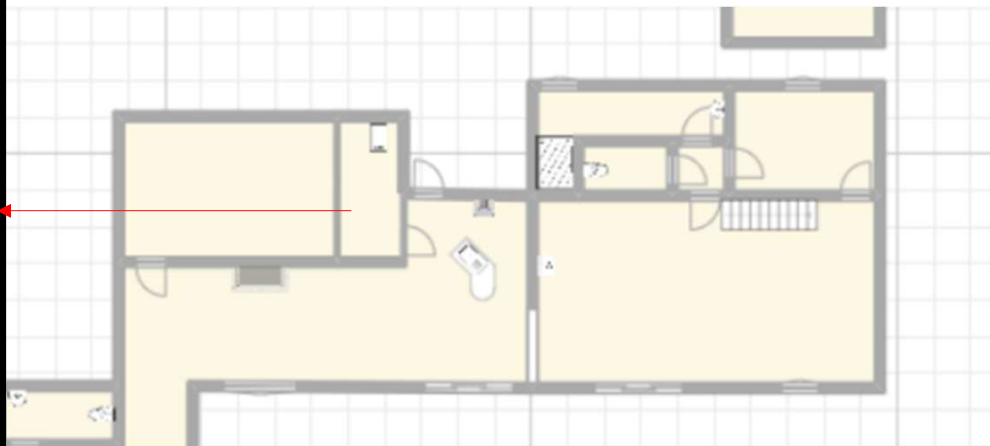
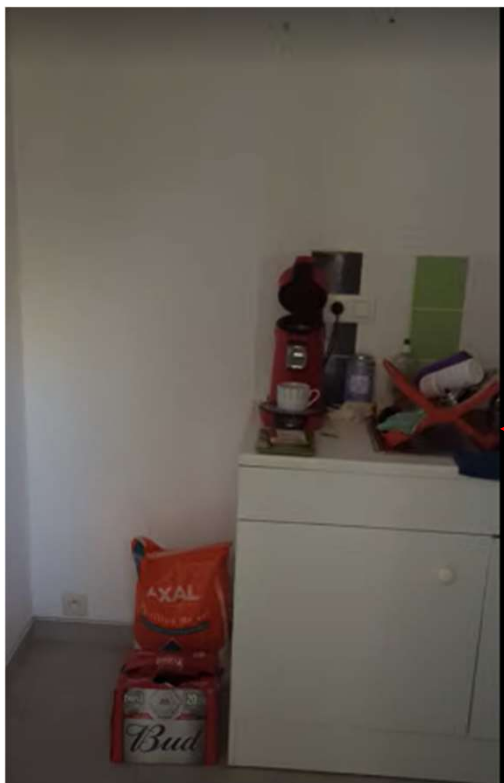


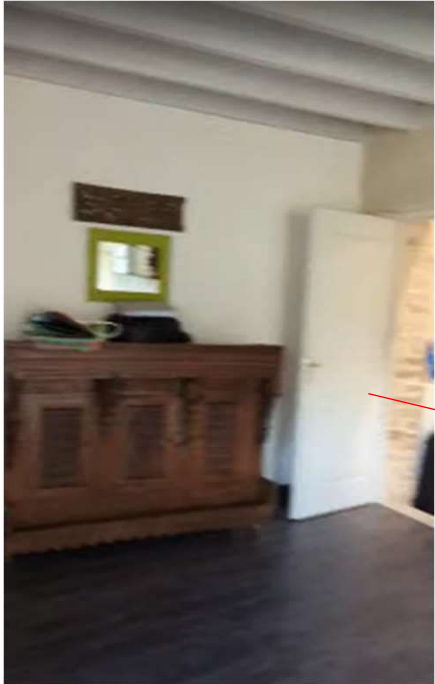


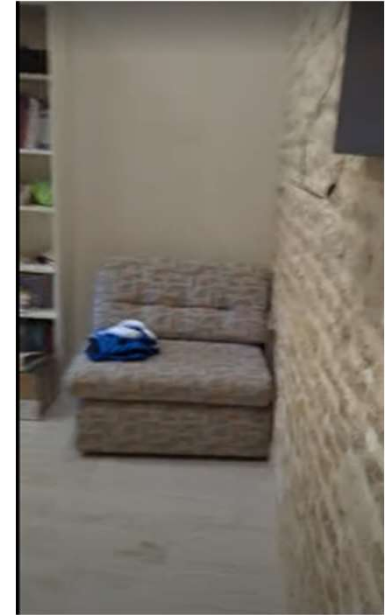
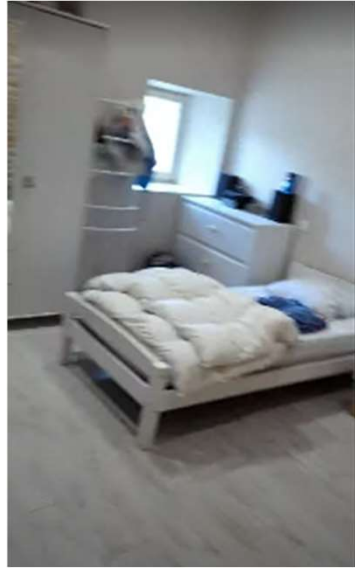
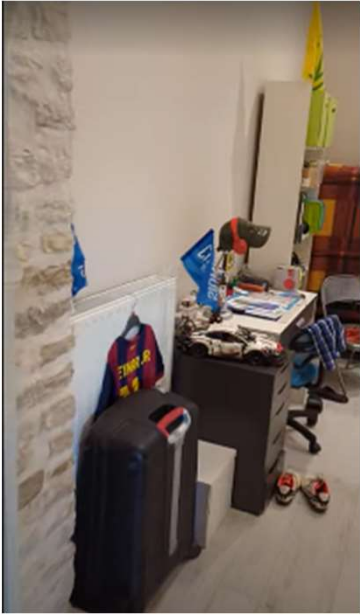
# Mezzanine

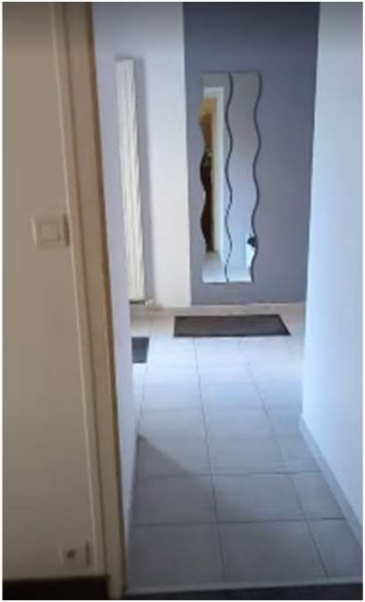


Arriere cuisine

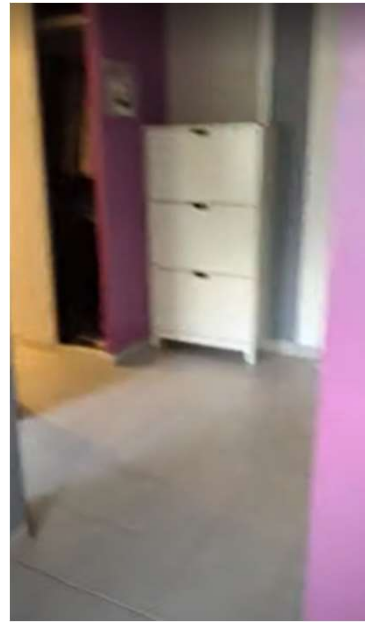
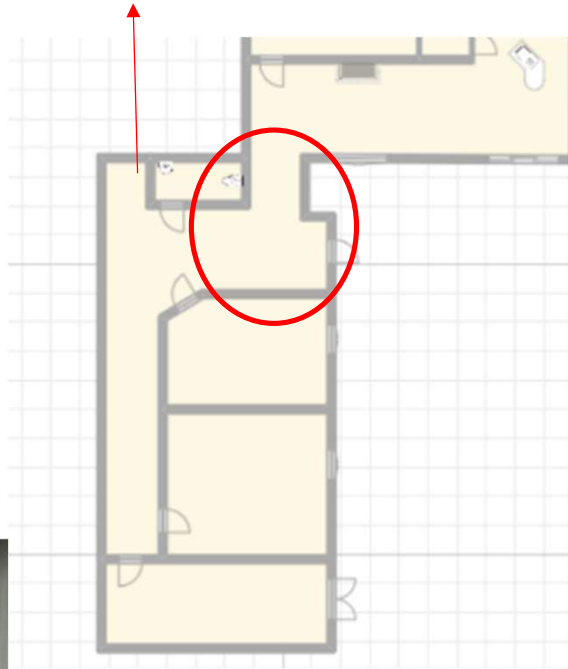


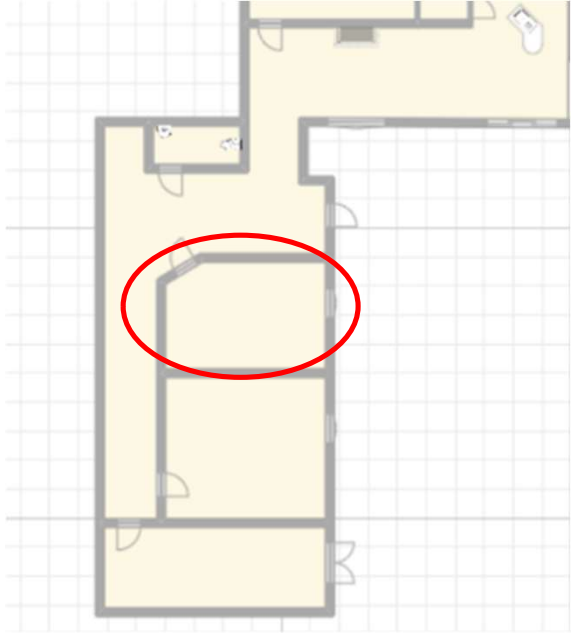


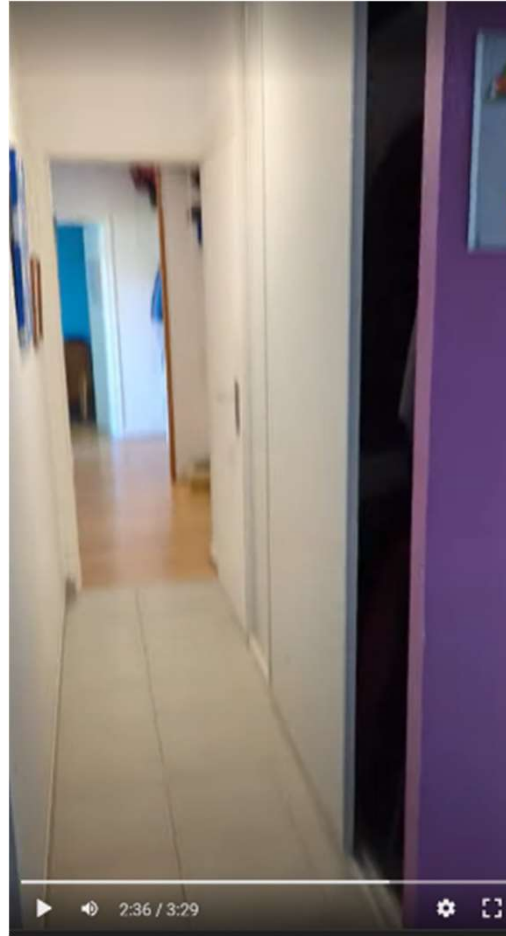


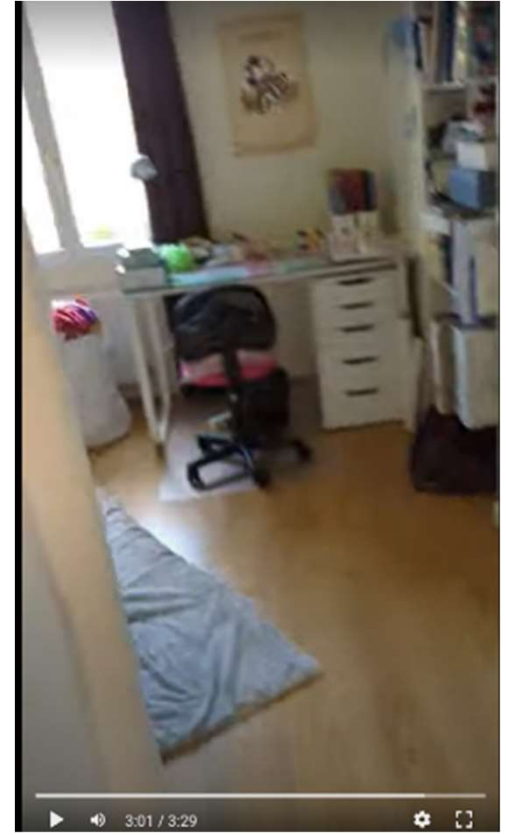
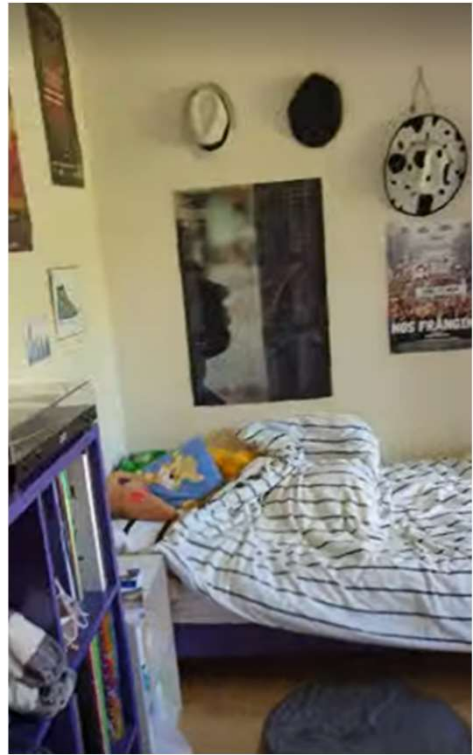
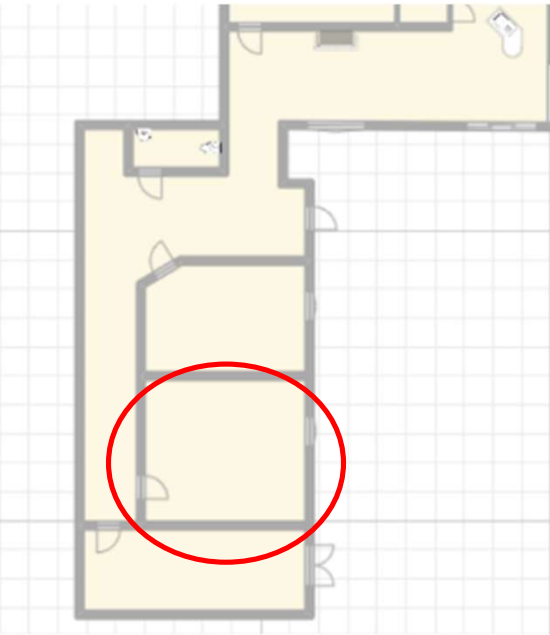


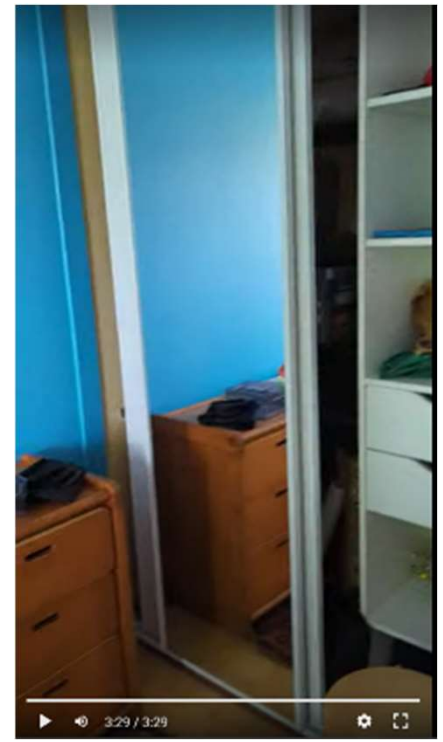
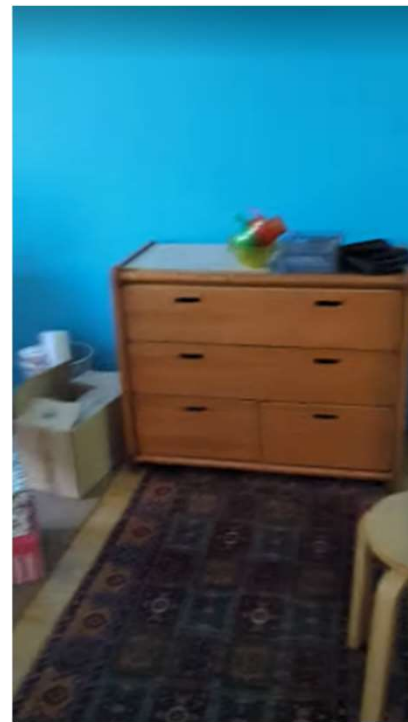
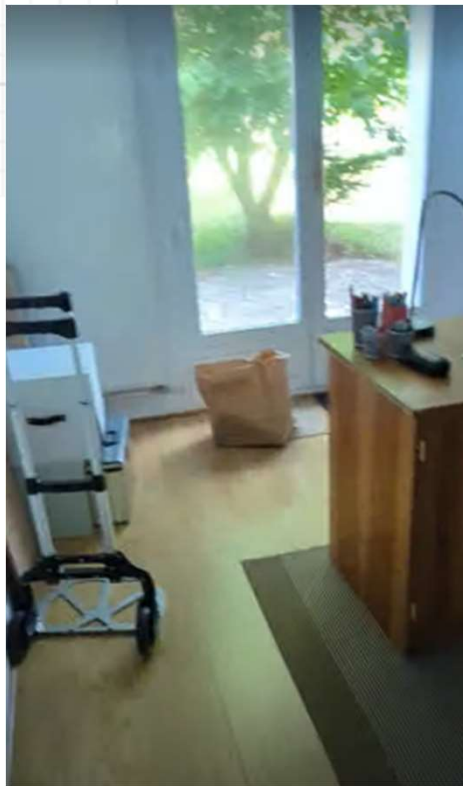
Evacuation  
eau











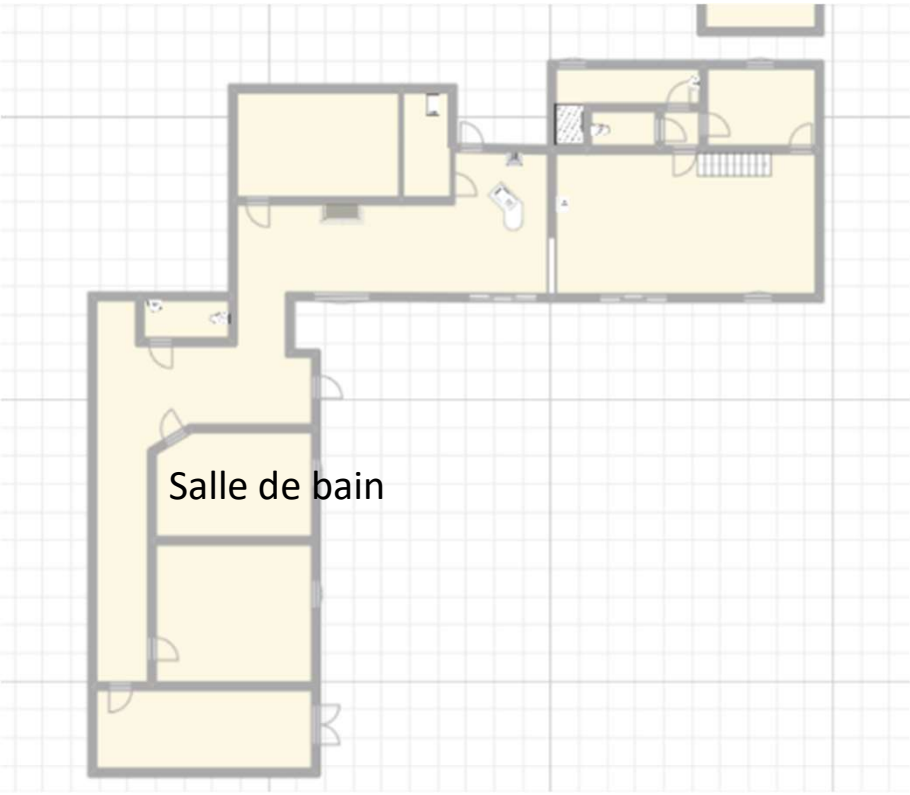
# Création d'une nouvelle salle de bain

Option 1 :

Utilisation de l'existant

Point négatif :

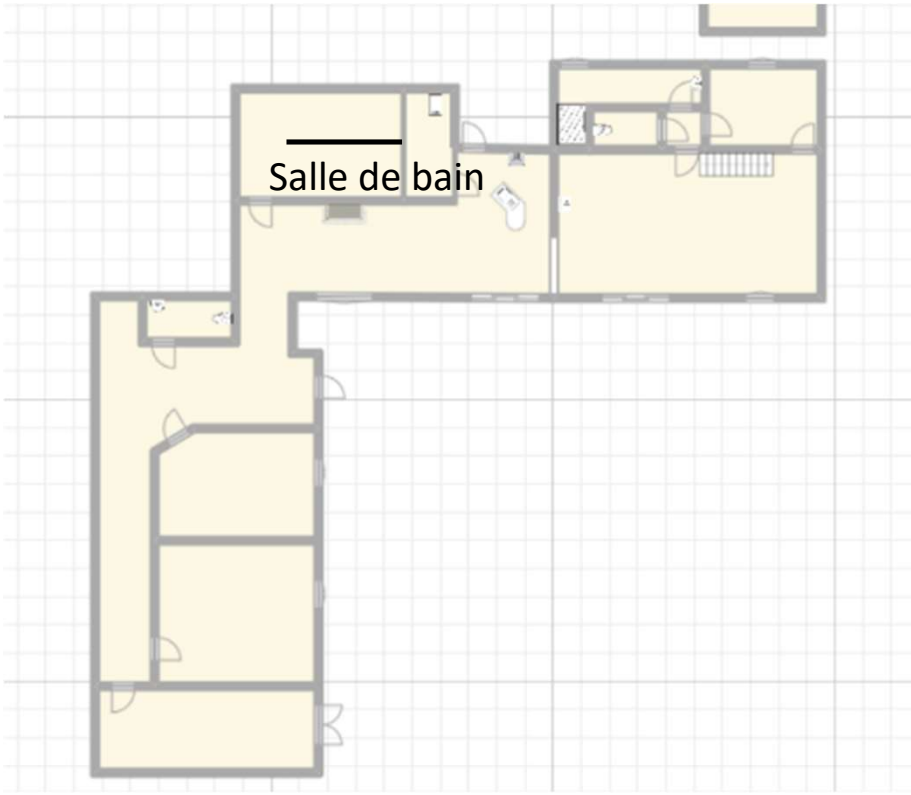
Perte d'une chambre dans la zone « nuit »



Option 2 :

Création suite parentale

Utilisation des branchement eau de l'arrière cuisine et gain d'une chambre supplémentaire en zone nuit



Inspiration

Contrainte :

Lit 180 x 200

Baignoire pour plus value ?



